

Wet Abrasive Blast Systems



Advantages

- **Dust free, deep cleaning without imbedded abrasive**
- **Combines steps; washing and blasting**
- **Warping reduced/eliminated**
- **Closed loop filtration/rinsing is standard on all systems**
- **Wide range of cosmetic finish options; matt to luster**



Model WT36 shown at left.
Available in Stainless AND
rotation molded construction.



Standard Manual and Semi-Automated Cabinets from
36" to 72" Square with many available options

Process:

We define the **“Wet Tech”** process as a water/media (abrasive) slurry driven by the combination of our specially designed, high volume pump and regulated compressed air across a part surface for a customer’s specific application.

Replaces:

- Manual and dry blast deburring
- Chemical use / disposal; minimized or eliminated
- Washing / dry / shot blasting are combined
- Goes a step beyond parts washing by combining with simultaneous applications

Our products are the result of **listening to our customers, engineers AND maintenance people**. We combine solid engineering with high quality stainless and no corrosive materials for high value, **durability**, and low, easy maintenance. We have established a global network of service oriented distributors who, along with our factory, are committed to **customer support**.

In House Services: In addition to manufacturing systems for end users, we have a lab in which we provide testing and limited run “job shop” Wet Tech processing. Please inquire for a proposal.

Wet Technologies has a full process testing lab available for demonstration. Call us to see what the "Wet Tech" process can do for you.

Surface Finish Reduction

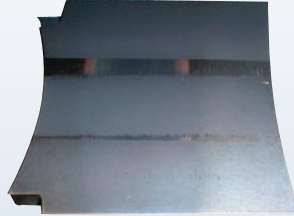


WT36RP with Small Parts Barrel

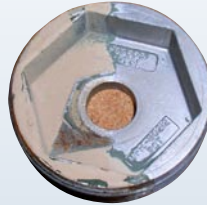
Scale Removal



Semiconductor Implant and Ceramic Tool Cleaning



Paint Stripping



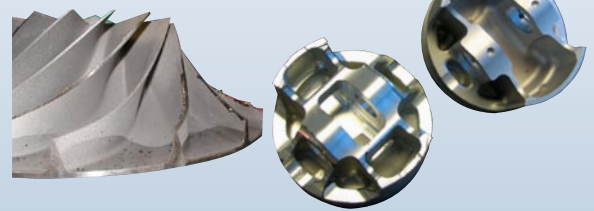
Mold Cleaning



Medical/Surgical



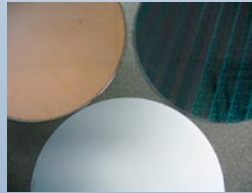
Deburring



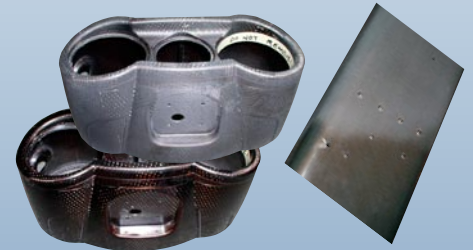
Automotive Remanufacturing



Silicon Wafer Stripping



Composite Preparation



Model	WT36RP	WT36SS	WT50SS	WT60SS
Interior Dimensions	36" x 36"	36" x 36"	50" x 50"	60" x 60"
Base Swing Door Dimensions	25"W x 28-1/2"H	24"W x 24"H	39"W x 34"H	47"W x 34"H
Optional Vertical Door Dimensions	25"W x 24"H	24"W x 24"H	39"W x 30"H or 36"H	49"W x 30"H or 36"H
Optional Turntable Dimensions	18"	18"	36"	44"

Additional options and custom/automated systems are available

Closed-Loop Filtration and Rinse Gun, 460V@15 amps standard. 208V & 230V optional. 32 CFM/Gun @ 80 psi



High Volume Liquid Abrasive and High Pressure Water Surface Finishing Systems



wettechnologies.com

1363 LINCOLN AVE., Unit-5, HOLBROOK, NY 11741 / 631-285-7285 / FAX: 631-285-7288

www.wettechnologies.com / Email: info@wettechnologies.com